

# Trailers and Related Equipment

Performance Coatings



**Carboline has been supplying cost-effective coating solutions to fabricators and owners since 1947. Designed to be applicator-friendly in shop environments while providing exceptional protection in the field, our products prove to be a winning combination for our customers.**

### **Problem Solving Approach**

---

Our goal is to help you find more efficient and cost-saving approaches to your painting process by using innovative coating technologies. Whether it is wet-on-wet, single-coat, or fast-curing systems, our coatings will often allow you to speed your process, reduce your costs and improve the performance of your coating system.

### **Performance Driven Products**

---

Not only do coatings have to perform on equipment when it comes to controlling corrosion and appearance, but they must perform in a shop environment. This means they must be easy to apply and offer benefits that result from faster throughput, fewer repairs, repaints, or call-backs.



## Not all trailers are created equal.

When it comes to your equipment, you choose the level of performance that's right for you. The National Association of Trailer Manufacturers (NATM) has developed a coating recommended practice that outlines four service levels based on corrosion protection and weathering resistance. Carboline offers shop-friendly coating systems that are recommended for each level.



### Systems for Every Need

- > Corrosion protection
- > Weathering resistance
- > Mar resistance
- > Chemical resistance
- > Fast cure
- > Single coat
- > Light or heavy duty
- > Non-slip coatings

### Technologies

- > Corrosion resistant zinc primers
- > Ultra-weathering urethane finishes
- > DTM (single-coat) alkyds, epoxies, polyaspartics and urethanes
- > Insulative acrylic and epoxy coatings
- > Chemically resistant epoxy linings
- > Surface tolerant mastics



## DTM (Direct-to Metal) Systems

Single-coat systems offer the ultimate in front-end savings by eliminating labor steps compared to multi-coat paint systems. A variety of coatings are available depending on the level of performance and weathering resistance desired.

### Carbocoat® Alkyds

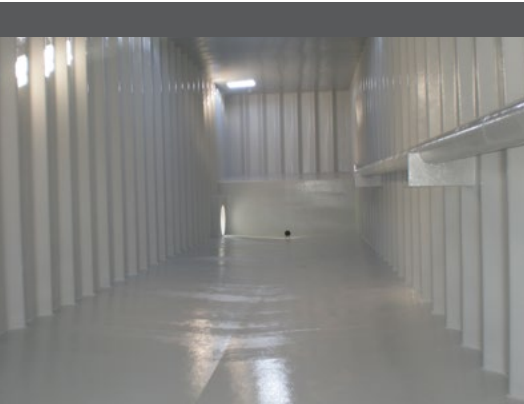
These single-component, alkyd-based coatings offer easy-to-apply features and economical initial costs. Their corrosion resistance and weathering properties are more suitable for light-duty equipment with short to moderate life expectancies.

### Carboquick® 200

This 2-component fast cure and high build polyaspartic coating provides excellent corrosion protection, durability, and long-term weatherability in just one coat. It is especially suitable for equipment that requires a higher level of aesthetics over a longer period of time.

### Carbothane® DTMs

These 2-component, high-build, urethane coatings offer speed of cure and high-performance weathering properties. They are especially suitable for equipment that requires a higher level of aesthetics over a more extended time period.



## Performance Systems

These systems consist of a corrosion-resistant primer and a weathering finish and offer the ultimate in longer-term corrosion protection and appearance. New technologies allow extremely fast recoat times (often wet-on-wet) which dramatically speeds the painting and curing process. Your choice of zinc-rich epoxy primers determines the long-term performance needs of your customers. The choice of urethane finishes allows you to dial-in shop needs with performance needs.

### Carboquick 200

This polyaspartic coating provides excellent color and gloss retention for long term appearance. It can be applied at up to 10 mils (254 microns) dry film thickness in one coat for excellent durability and cures fast to speed production.

### Carbothane Finishes

These urethane coatings provide excellent color and gloss retention for long-term appearance. Polyester blends offer increased chemical resistance for special applications.

### Carbozinc® Primers

These zinc-rich epoxy coatings provide outstanding corrosion and undercutting resistance and long-term protection. Higher zinc levels offer even longer term endurance.

# Trailer System Guide

This system guide is designed to help the user make the proper selection of coating systems based on their needs of corrosion performance, VOC compliance, weathering requirements, and operational parameters regarding dry and handle times. Most of these systems can be accelerated for dry times through the use of either heat or field additives, depending on the need.

This guide is comprised of three sections: Single-Coat Systems, Standard Performance Systems, and High-Performance Systems and is designed to guide the user into systems with varying service life expectations.

## Single-Product Direct-to-Metal (DTM) Systems

PRODUCT	DESCRIPTION	VOC (g/l)	DFT (mils)	DRY HANDLE	GLOSS	NATM* WEATHER CLASS
<b>DTM Alkyds</b>						
<b>Carbocoat 8215</b>	Semi-gloss alkyd enamel Good weathering High build (better barrier) Fast dry times	418	2.0-3.0	2 hrs	Semi	2
<b>Carbocoat 75</b>	High gloss alkyd enamel Good weathering resistance	<450	1.5-2.0	9 hrs	High	2
<b>DTM Polyurethanes</b>						
<b>Carbothane 133 LH</b>	Satin finish polyester-polyurethane Chemical resistant	324	3.0-5.0	6 hrs	Satin	3
<b>Carbothane 8812</b>	High gloss acrylic-polyurethane	395	3.0-5.0	6 hrs	High	4
<b>Carbothane 8832</b>	High gloss acrylic-polyurethane Faster dry times	336	3.0-5.0	2 hrs	High	4
<b>Carbothane 8845</b>	High gloss acrylic-polyurethane High DOI (Distinctness of Image)	228	3.0-5.0	7 hrs	High	4
<b>Carboquick 200</b>	Gloss aliphatic polyaspartic High build and fast cure	246	6.0-10.0	1.5 hrs	Gloss	4

NATM CLASSES	NATM CORROSION PERFORMANCE	NATM WEATHERING PERFORMANCE	EXPECTED SERVICE LIFE**
<b>Class 1</b>	200 hours Salt Fog	Up to 200 hours QUV-B	6-12 months
<b>Class 2</b>	>300 hours Salt Fog	>200 hours QUV-B	12-24 months
<b>Class 3</b>	>400 hours Salt Fog	>400 hours QUV-B	36-60 months
<b>Class 4</b>	>500 hours Salt Fog	>1000 hours QUV-B	>60 months

\*National Association of Trailer Manufacturers

\*\*Service life will be dependent on the coating system selected, the surface preparation used and the operating exposure or service.

Carboquick 200 and Carbocoat 75 tested with QUV-A

Carbocoat 75 tested per ASTM D5894 Cyclic Salt Fog/UV Exposure

Carboquick 200 tested per ISO 12944-6

All urethanes can be accelerated using Additive 8509 to reduce dry to handle times by 25-50%; and further accelerated using heat.

## Standard Performance Systems

PRODUCT	DESCRIPTION	VOC (g/l)	DFT (mils)	DRY RECOAT	DRY HANDLE	NATM PERFORMANCE CLASSES
<b>Corrosion Resistant Primers</b>						<b>Anti-Corrosive Performance Class</b>
<b>Carbocoat 8239</b>	Alkyd primer Single-component Fast dry times	335	2.0-3.0	30 min	1-2 hrs	1
<b>Carbocoat 8287 WR</b>	Water reducible alkyd primer Single-component	327	1.5-2.5	60 min	30 min	1
<b>Carbocoat 153</b>	Modified phenolic alkyd primer Fast dry; low VOC	245	2.0-3.0	30 min	3 hrs	2
<b>Carboguard 8922 LH</b>	Modified epoxy primer Fast dry	334	2.0-4.0	5 min	3 hrs	3
<b>Weatherable Topcoats</b>						<b>Weathering Performance Class</b>
<b>Carbocoat 75</b>	High gloss alkyd enamel Good weathering resistance	<450	1.5-2.0	24 hrs	9 hrs	2
<b>Carbocoat 8215</b>	Semi-gloss alkyd enamel High build (better barrier) Good weathering resistance Fast dry times	418	2.0-3.0	1 hrs	2 hrs	2
<b>Carbocoat 8259 WR</b>	High gloss, water reducible alkyd	327	1.5-2.0	30 min	30 min	1

## High Performance Systems

NAME	DESCRIPTION	FEATURES				NATM* CLASS
		VOC (G/L)	ZINC CONTENT	THICKNESS	TOPCOAT TIME	CORROSION CLASS
<b>High Performance Zinc Primers</b>						
<b>Carbozinc 11 FC</b>	Inorganic-zinc with % zinc content Outstanding corrosion protection	384	85%	2-3 mils	4 hours	4
<b>Carbozinc 808</b>	Epoxy-zinc with 60% zinc content Excellent corrosion protection Low VOC	259	60%	2-4 mils	90 min	4
<b>Carbozinc 8701</b>	Epoxy-zinc with 75% zinc content Superior corrosion resistance	334	75%	2-3 mils	2 hours	4
<b>High Performance Polyurethane and Polyaspartic Finishes</b>						
		VOC (G/L)	HIGH GLOSS	CHEMICAL RESISTANCE	DRY HANDLE*	WEATHER CLASS
<b>Carbothane 134 HG</b>	High gloss acrylic-polyurethane Excellent weathering	252	✓		8 hours	4
<b>Carbothane 8845</b>	High gloss acrylic-polyurethane Excellent weathering Can be applied direct to metal	228	✓	✓	7 hours	4
<b>Carbothane 133 LH</b>	Satin polyester-polyurethane Very good weathering Chemical resistant	324	✓	✓	6 hours	3
<b>Carboquick 200**</b>	Gloss aliphatic polyaspartic Excellent weathering High build and fast cure	246	✓	✓	1.5 hours	4

\* All urethanes can be accelerated using Additive 8509 to reduce dry to handle times by 25-50%; and further accelerated using heat.

\*\* Carboquick 200 not compatible with Carbozinc 808.



# GLOBAL COATINGS LEADERS™

RIGHT PEOPLE · RIGHT PRODUCTS · RIGHT LOCATIONS



## GLOBAL MANUFACTURING PLANTS

**CARBOLINE COMPANY**  
GLOBAL HEADQUARTERS  
2150 SCHUETZ ROAD  
ST. LOUIS, MO 63146 USA  
PH: +1-314-644-1000  
WWW.CARBOLINE.COM

**ARGENTINA – BUENOS AIRES**  
EINSTEIN 1095  
PARQUE INDUSTRIAL OKS  
GARÍN PROV. DE BUENOS  
AIRES, ARGENTINA  
PHONE: 54-3327-44-2222  
FAX: 54-3327-44-2223

**BRAZIL – CAÇAPAVA**  
ROD. VITO ARDITO, 6401 -  
JARDIM CAMPO GRANDE,  
CAÇAPAVA - SP,  
12282-535, BRAZIL  
PHONE: +55 (12) 3221-3000

**CHINA – DALIAN**  
HOU SHI CUN, DA WEI JIA  
ZHEN  
JIN ZHOU DISTRICT  
DALIAN, CHINA 116110  
PHONE: 86-411-8789-8441,  
8442, 8443, 8444  
FAX: 86-411-8789-8445

**INDIA – CHENNAI**  
NO. 356 & 357 SIDCO  
INDUSTRIAL ESTATE  
AMBATTUR,  
CHENNAI 600 098  
INDIA  
PHONE: 91-22-28500321  
FAX: 91-22-28500323

**INDONESIA**  
PT CARBOLINE INDONESIA  
SOLUSI  
WISMA 77, TOWER 1 – 12TH FL  
JL. LETJEN S PARMAN KAV 77  
SLIPI, JAKARTA BARAT  
INDONESIA 11410  
PHONE: +62-21-536-3070

**ITALY**  
VIA M. VIGANO, DE VIZZI,77  
20092 CINISELLO BALSAMO  
(MI), ITALY  
PHONE: +39 02 947592.36  
FAX: +39 02 6172687

**JAPAN – AMAGASAKI**  
TERAMOTO UNYU SOKO CO.,  
LTD 17  
MINAMIHATSUSHIMA-CHO,  
AMAGASAKI, 660-0833 JAPAN  
PHONE: 81-3-3643-4501  
FAX: 81-3-3643-2951

**NEW ZEALAND – TAURANGA**  
91-111 OROPI ROAD  
GREERTON  
TAURANGA  
NEW ZEALAND  
PHONE: +64-7-5411-221  
FAX: +64-7-541-1310

**NORWAY – LIERSTRANDA**  
P.O. BOX 593  
3412 LIERSTRANDA, NORWAY  
PHONE: 47-32-857300  
FAX: 47-32-857301

**SAUDI ARABIA – DAMMAM**  
1ST INDUSTRY CITY, 28TH  
STREET  
P.O. BOX 1050  
DAMMAM 31431,  
KINGDOM OF SAUDI ARABIA  
PHONE: +966-3-847-3044  
FAX: +966-3-847-3689

**SOUTH AFRICA –  
JOHANNESBURG**  
8 CRESSSET ROAD  
MIDRAND INDUSTRIAL PARK  
JOHANNESBURG,  
SOUTH AFRICA  
PHONE: 27-11-2545500  
FAX: 27-11-310-2872

**SOUTH KOREA – BUSAN**  
43-1, JINYOUNG-RI  
JINYOUNG-EUB  
KIMHAE-CITY, 621-800  
KYOUNGSANGNAMDO, KOREA  
PHONE: 82-55-343-6441/5  
FAX: 82-55-343-6414

**THAILAND**  
DIMET (SIAM) PUBLIC  
COMPANY LIMITED.  
602 MOO 2 BANGPOO  
INDUSTRIAL ESTATE  
BANGPOOMAI, MUANG  
SAMUTPRAKARN  
THAILAND  
PHONE: 66-2-323-2800

**TURKEY – BURSA**  
ALI OSMAN SONMES CAD.  
NO:4  
BURSA, DOSAB 16369 TURKEY  
PHONE: 90-224-261-0537

**UAE – DUBAI**  
P.O. BOX 3034  
DUBAI, UAE  
PHONE: 971-4-347-0460  
FAX: 971-4-347-0242

**USA – DAYTON**  
95 AIRPARK VISTA BLVD.  
DAYTON, NV 89403  
PHONE: 775-246-0760  
FAX: 775-246-0763

**USA – GREEN BAY**  
614 ELIZABETH ST  
GREEN BAY, WI 54302  
PHONE: 920-437-6561  
FAX: 920-437-8546

**USA – LAKE CHARLES**  
900 OPELOUSAS STREET  
LAKE CHARLES, LA 70601  
PHONE: 337-433-0605  
FAX: 337-439-0380

**USA – LOUISA**  
321 DUKE ST.  
LOUISA VA 23093  
PHONE: 540-967-5119  
FAX: 540-967-5120

**VIETNAM – TINH BINH DUONG**  
LO D, 4R-CN  
KHU CONG NGNIEP MY PHUOC 3  
THI XA BEN CAT  
VIETNAM  
PHONE: (84) 08-3822-7684

